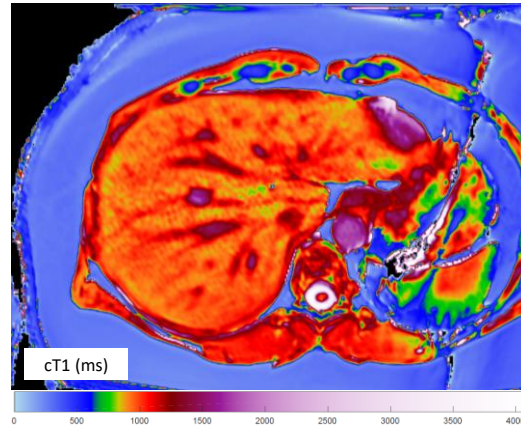
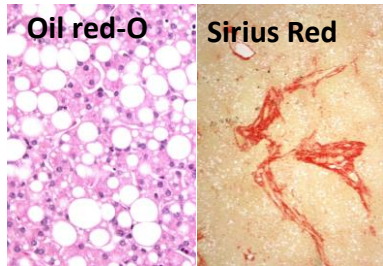


# Case Study: NALFD patient following bariatric surgery

## LiverMultiScan can be part of a diagnostic pathway for patients with liver disease

44 year old, obese female; candidate for bariatric surgery.

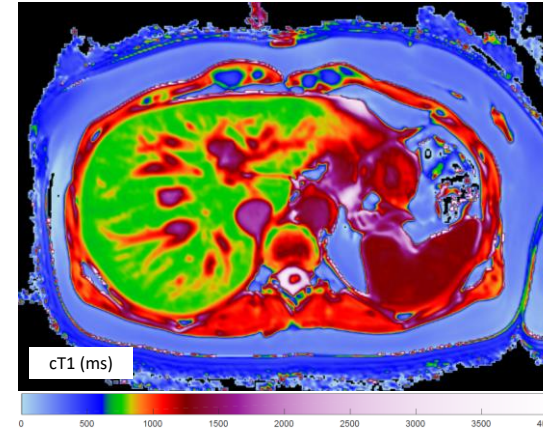


### Pre-operative: March 2011

**PDFF:** 20.4%  
*Normal range:* <5.6%

**CT1:** 996.1ms  
*Reference interval:* 633ms – 794ms

- BMI = 34.3, visceral fat content = 131cm<sup>2</sup>.
- Liver biopsy showed 90% of hepatocytes had lipid inclusions, inflammation, Ishak score = 3, pericellular fibrosis.



### Post-operative: March 2012

**PDFF:** 1.7%  
*Normal range:* <5.6%

**CT1:** 783.5ms  
*Reference interval:* 633ms – 794ms

- BMI = 24.4, visceral fat content = 28 cm<sup>2</sup>.
- No clinical indication to support a follow-up biopsy.