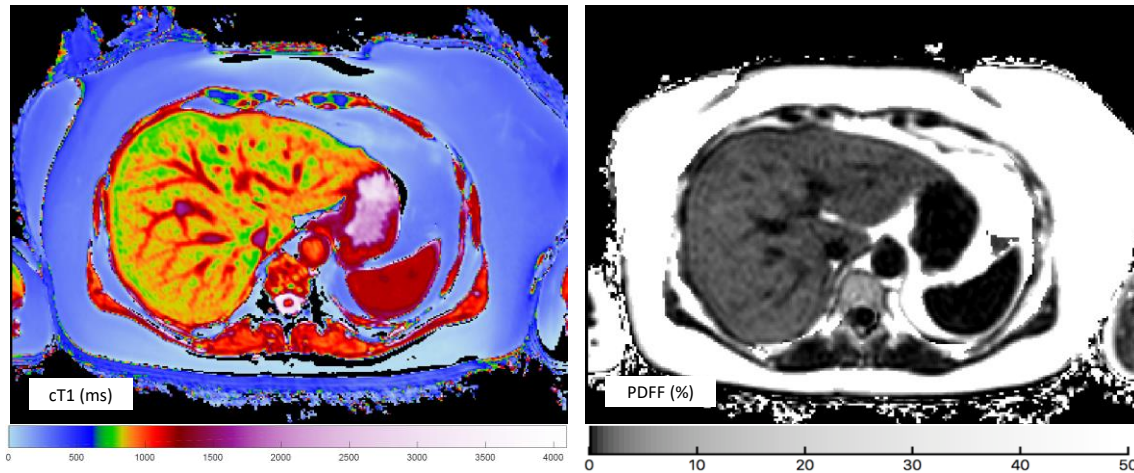


Case Study: NAFLD Patient with lifestyle intervention

LiverMultiScan allows safe and non-invasive characterization of liver tissue

57 year old female, overweight, also suffered from chronic fatigue syndrome and fibromyalgia.

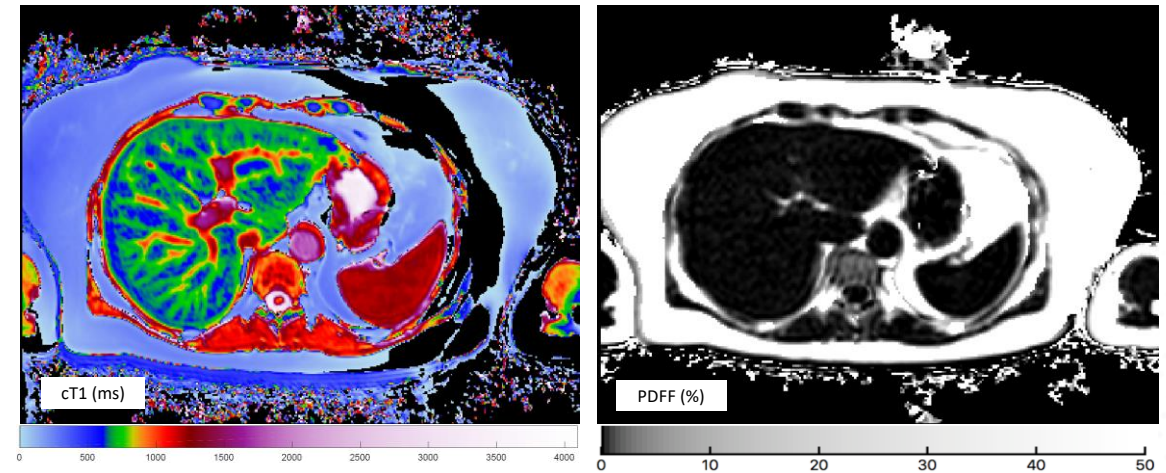


MONTH 0

PDFF: 16.5%
Normal range: <5.6%

T2*: 14.5ms
Normal range: >12.5ms

cT1: 878.4ms
Reference interval: 633ms – 794ms



MONTH 6

PDFF: 2.4%
Normal range: <5.6%

T2*: 16.2ms
Normal range: >12.5ms

cT1: 738.3ms
Reference interval: 633ms – 794ms